

# U.S. Rail Traffic<sup>1</sup>

Week 53, 2025 – Ended January 3, 2026

	This Week		2025 Total		
	Cars	% chng*	Cumulative	Avg/wk <sup>2</sup>	vs 2024
<b>Total Carloads</b>	<b>192,665</b>	<b>-2.8%</b>	<b>11,508,797</b>	<b>221,323</b>	<b>1.5%</b>
Chemicals	32,493	2.3%	1,698,766	32,669	0.8%
Coal	55,892	-0.6%	3,029,496	58,260	3.1%
Farm Products excl. Grain, and Food	15,694	-4.7%	877,433	16,874	0.8%
Forest Products	7,337	-8.5%	419,962	8,076	-1.6%
Grain	21,022	0.9%	1,123,998	21,615	5.2%
Metallic Ores and Metals	17,064	-3.3%	1,022,714	19,668	-1.0%
Motor Vehicles and Parts	5,718	-11.3%	790,040	15,193	0.7%
Nonmetallic Minerals	21,565	-6.1%	1,553,820	29,881	1.6%
Petroleum and Petroleum Products	10,146	-6.5%	538,048	10,347	-1.6%
Other	5,734	-17.8%	454,520	8,741	0.2%
<b>Total Intermodal Units</b>	<b>211,628</b>	<b>-5.1%</b>	<b>14,055,633</b>	<b>270,301</b>	<b>1.5%</b>
<b>Total Traffic</b>	<b>404,293</b>	<b>-4.0%</b>	<b>25,564,430</b>	<b>491,624</b>	<b>1.5%</b>

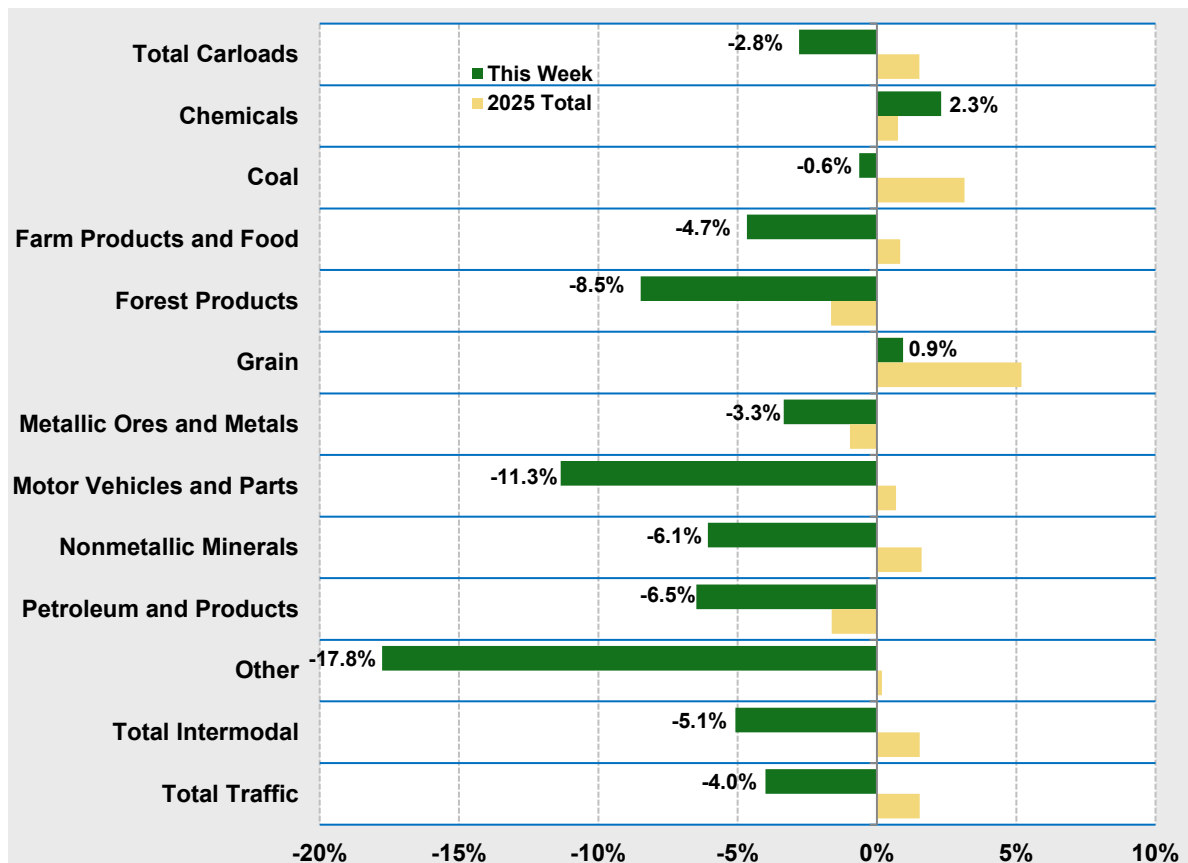
\* From comparable week 52 weeks earlier, which in this case is week 1, 2025

<sup>1</sup> Excludes U.S. operations of CPKC, CN and GMXT.

<sup>2</sup> Average per week figures may not sum to totals as a result of independent rounding.

## Trends, 2025 vs 2024

### United States



# Canadian Rail Traffic<sup>1</sup>

Week 53, 2025 – Ended January 3, 2026

	This Week		2025 Total		
	Cars	% chng*	Cumulative	Avg/wk <sup>2</sup>	vs 2024
<b>Total Carloads</b>	<b>78,588</b>	<b>-2.3%</b>	<b>4,659,319</b>	<b>89,602</b>	<b>-1.1%</b>
Chemicals	12,873	1.9%	723,261	13,909	2.5%
Coal	6,412	-19.3%	413,688	7,956	3.7%
Farm Products excl. Grain, and Food	7,743	10.1%	384,462	7,394	-3.4%
Forest Products	5,095	-3.8%	307,945	5,922	-7.4%
Grain	11,442	16.7%	608,172	11,696	13.4%
Metallic Ores and Metals	15,289	-2.5%	839,365	16,142	-10.2%
Motor Vehicles and Parts	2,178	-40.7%	311,187	5,984	-7.1%
Nonmetallic Minerals	5,861	-1.0%	404,413	7,777	2.0%
Petroleum and Petroleum Products	10,183	-6.3%	553,937	10,653	0.7%
Other	1,512	-4.2%	112,889	2,171	-8.4%
<b>Total Intermodal Units</b>	<b>55,805</b>	<b>-9.7%</b>	<b>3,727,722</b>	<b>71,687</b>	<b>6.3%</b>
<b>Total Traffic</b>	<b>134,393</b>	<b>-5.5%</b>	<b>8,387,041</b>	<b>161,289</b>	<b>2.0%</b>

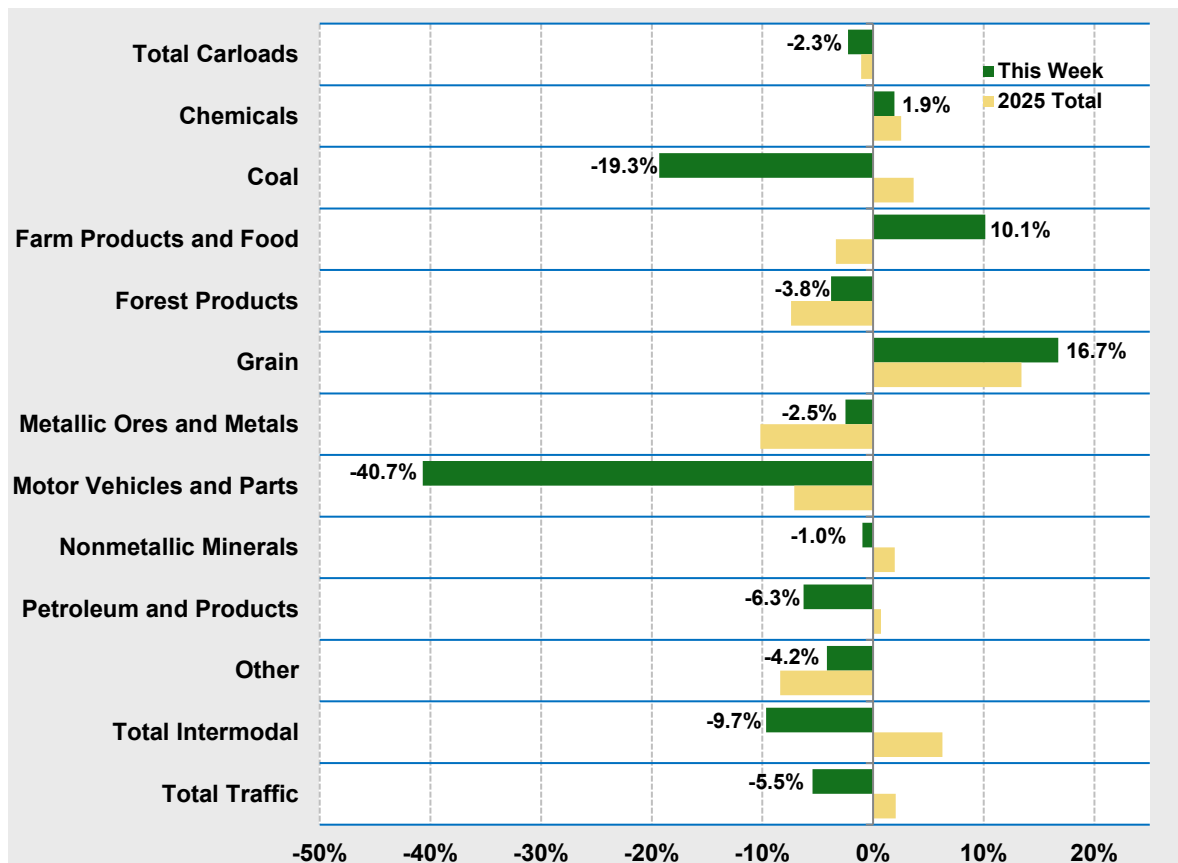
\* From comparable week 52 weeks earlier, which in this case is week 1, 2025

<sup>1</sup> Includes U.S. and Mexico operations of CPKC and CN.

<sup>2</sup> Average per week figures may not sum to totals as a result of independent rounding.

## Trends, 2025 vs 2024

Canada



# Mexican Rail Traffic<sup>1</sup>

Week 53, 2025 – Ended January 3, 2026

	This Week		2025 Total		
	Cars	% chng*	Cumulative	Avg/wk <sup>2</sup>	vs 2024
<b>Total Carloads</b>	<b>8,671</b>	<b>-10.7%</b>	<b>655,731</b>	<b>12,610</b>	<b>-9.9%</b>
Chemicals	700	3.2%	39,507	760	-13.1%
Coal	0	-100.0%	297	6	-71.0%
Farm Products excl. Grain, and Food	1,005	-45.1%	89,212	1,716	-6.6%
Forest Products	48	23.1%	1,396	27	-37.6%
Grain	1,181	-13.1%	69,578	1,338	-18.5%
Metallic Ores and Metals	2,129	40.5%	115,384	2,219	-11.3%
Motor Vehicles and Parts	737	-11.5%	103,067	1,982	2.8%
Nonmetallic Minerals	2,266	-7.3%	168,024	3,231	-9.3%
Petroleum and Petroleum Products	513	-37.2%	37,275	717	-11.4%
Other	92	-47.4%	31,991	615	-21.2%
<b>Total Intermodal Units</b>	<b>10,195</b>	<b>43.1%</b>	<b>579,850</b>	<b>11,151</b>	<b>0.04%</b>
<b>Total Traffic</b>	<b>18,866</b>	<b>12.1%</b>	<b>1,235,581</b>	<b>23,761</b>	<b>-5.5%</b>

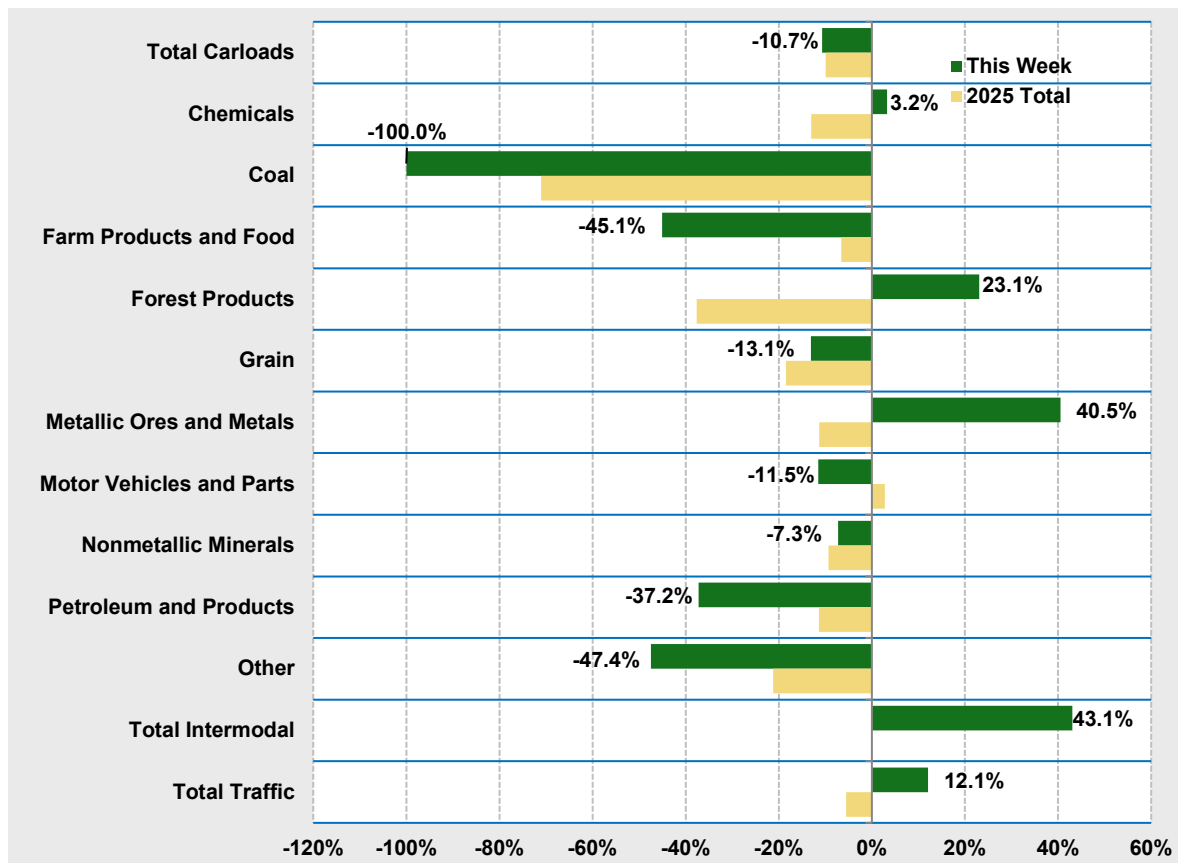
\* From comparable week 52 weeks earlier, which in this case is week 1, 2025

<sup>1</sup> Includes U.S. and Mexico operations of GMXT. Excludes Mexico operation of CPKC.

<sup>2</sup> Average per week figures may not sum to totals as a result of independent rounding.

## Trends, 2025 vs 2024

Mexico



## North American Rail Traffic

Week 53, 2025 – Ended January 3, 2026

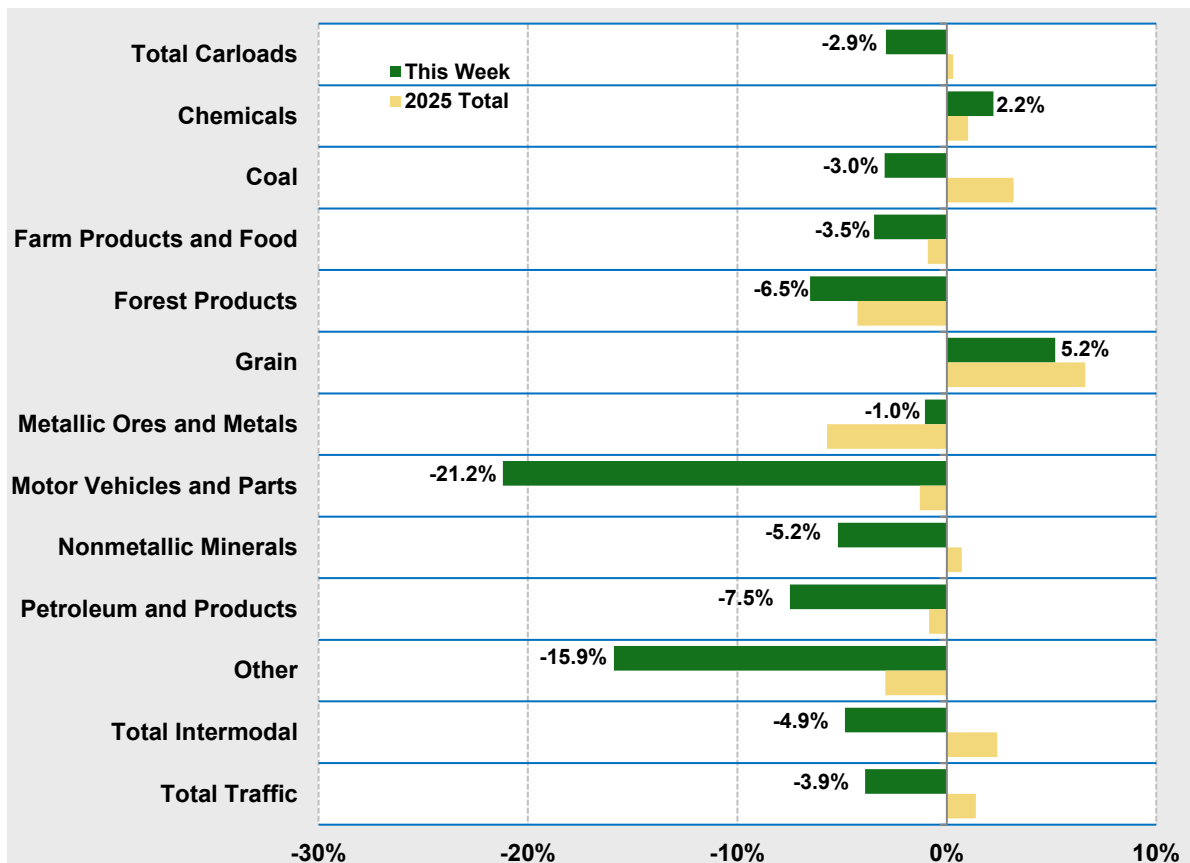
	This Week		2025 Total		
	Cars	% chng*	Cumulative	Avg/wk <sup>1</sup>	vs 2024
<b>Total Carloads</b>	<b>279,924</b>	<b>-2.9%</b>	<b>16,823,847</b>	<b>323,536</b>	<b>0.3%</b>
Chemicals	46,066	2.2%	2,461,534	47,337	1.0%
Coal	62,304	-3.0%	3,443,481	66,221	3.2%
Farm Products excl. Grain, and Food	24,442	-3.5%	1,351,107	25,983	-0.9%
Forest Products	12,480	-6.5%	729,303	14,025	-4.3%
Grain	33,645	5.2%	1,801,748	34,649	6.6%
Metallic Ores and Metals	34,482	-1.0%	1,977,463	38,028	-5.7%
Motor Vehicles and Parts	8,633	-21.2%	1,204,294	23,160	-1.3%
Nonmetallic Minerals	29,692	-5.2%	2,126,257	40,890	0.7%
Petroleum and Petroleum Products	20,842	-7.5%	1,129,260	21,717	-0.9%
Other	7,338	-15.9%	599,400	11,527	-2.9%
<b>Total Intermodal Units</b>	<b>277,628</b>	<b>-4.9%</b>	<b>18,363,205</b>	<b>353,139</b>	<b>2.4%</b>
<b>Total Traffic</b>	<b>557,552</b>	<b>-3.9%</b>	<b>35,187,052</b>	<b>676,674</b>	<b>1.4%</b>

\* From comparable week 52 weeks earlier, which in this case is week 1, 2025

<sup>1</sup> Average per week figures may not sum to totals as a result of independent rounding.

### Trends, 2025 vs 2024

North America



## Major Rail Traffic Groups And the Associated *Weekly Railroad Traffic* Commodity Categories

<b>Chemicals</b>
Chemicals
<b>Coal</b>
Coal
<b>Farm Products excl. Grain, and Food</b>
Farm products excl. grain
Grain mill products
Food products
<b>Forest Products</b>
Primary forest products
Lumber & wood products
Pulp & paper products
<b>Grain</b>
Grain
<b>Metallic Ores and Metals</b>
Metallic ores
Coke
Primary metal products
Iron & steel scrap
<b>Motor Vehicles and Parts</b>
Motor vehicles & parts
<b>Nonmetallic Minerals</b>
Crushed stone, sand & gravel
Nonmetallic minerals
Stone, clay & glass products
<b>Petroleum and Petroleum Products</b>
Petroleum and petroleum products
<b>Other</b>
Waste & nonferrous scrap
All other carloads
<b>Intermodal Units</b>
Containers
Trailers

The rail traffic data herein come from the AAR's Weekly Railroad Traffic report (WRT). Data in WRT are subject to revision for up to a year following initial submission by a reporting railroad. When a railroad is unable to submit its traffic figures for the current week, the AAR may repeat figures from a prior period or include an estimate. These figures are replaced with carrier-reported data as soon as possible, and future reports reflect these revisions. WRT includes more detailed rail traffic data than is provided herein. Monthly rail traffic data are available in the AAR's Rail Time Indicators report (RTI), which (like WRT) is free to AAR members and is available to others via a one-year subscription. WRT and RTI reports can be ordered at [www.aar.org/Pages/AllProducts.aspx](http://www.aar.org/Pages/AllProducts.aspx).